

Ventilation Equipment

Odor reduction hood for 20 GN 1/1 electric lengthwise combi ovens

ITEM # _____

MODEL # _____

NAME # _____

SIS # _____

AIA # _____


9R0124 (9R0124)

 Condensation Hood for
 Electric 201 Skyline Ovens

Main Features

- Filtering surface protects against fire hazard.
- No need for an external exhaust pipe, thus eliminating carpentry costs.
- Complete ventilation system which eliminates the need for an exhaust duct with external connection.
- UV system attacks the fat molecules eliminating unpleasant odors and bacteria; catalyst filter restrain the residual odors and no reacted ozone.
- Fully automatic two speed fan control for optimal efficiency.
- Baffle and mesh filters are removable from the front of the unit, while HEPA is accessible from the top for easy cleaning and maintenance. Stainless Steel baffle filter can be washed in dish washer.
- Possibility to activate air purification system when the oven is in stand by (not cooking) or in cleaning phase.
- The cable connection between the hood and the oven makes possible the communication between them. Connection of the hood to the oven's software automatically activates fan power and odor absorption based on real oven activity.
- Interlock with the oven allows the system to know when maintenance is needed to maintain peak performance.
- Can be used with 20 GN 1/1 electric LW combi ovens.
- 3 stage filtration for grease mitigation. The stage 1 baffle filter removes large grease particles. The stage 2 mesh filter removes finer moisture and grease particles. Finally, the stage 3 MERV 14 HEPA filter removes particle sizes from 0.3-1.0 microns with up to 84% efficiency and 1.0-3.0 microns with 90% or greater efficiency.
- Frontal overhang for optimal capture and containment during door opening.
- Hoods comply with UL 710B and UL197 certifying the hood as a ventless solution.
- Total grease laden emissions are less than the 5 mg/m³ standard limit based in the EPA Method 202.

Construction

- Constructed entirely in 304 AISI stainless steel.
- Automatic door opening activation system.
- Multiple filtration systems:
 - prefiltering of exhaust steam through stainless steel labyrinth filters;
 - condensation filter and extra droplets separator acting as a steam-liquid separator;

APPROVAL: _____

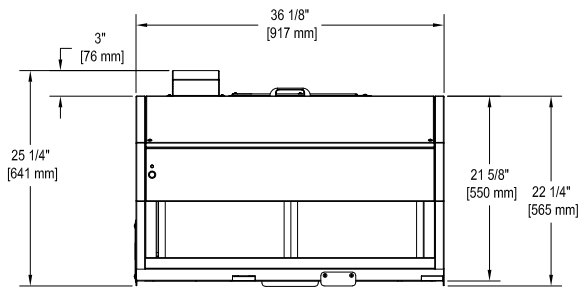
- UV system attacks the fat molecules eliminating unpleasant odors and bacteria;
- catalyst filter restrain the residual odors and no reacted ozone.
- Developed and produced in ISO 9001, ISO 14001 and ISO 50001 certified factory.
- Must be installed in a space where normal aeration, according to regulations, is present.

Sustainability

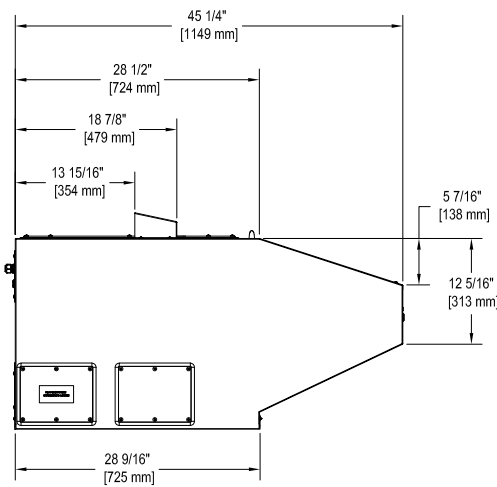


- Efficient reduction of latent load made possible by integrated heat exchanger for removal of steam.

Front

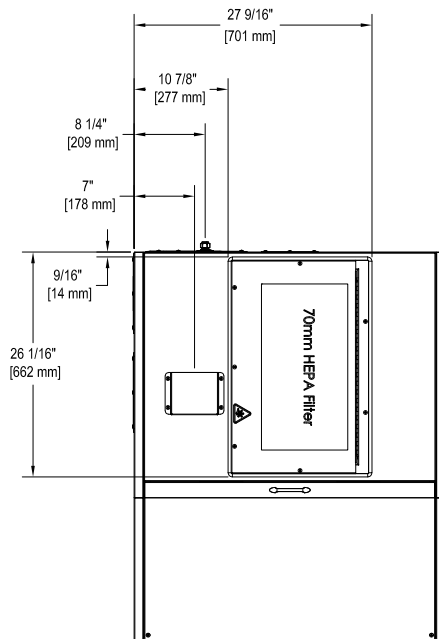


Side



EI = Electrical connection

Top



Electric

Supply voltage:

9R0124 (9R0124) 110-120 V/1 ph/60 Hz

Amps:

1.7 Amps

Total Watts:

0.4 kW

Key Information:

External dimensions, Width: 36 1/8" (917 mm)

External dimensions, Depth: 45 1/4" (1149 mm)

External dimensions, Height: 25 1/4" (641 mm)

Net weight: 180 kg

Air Emission:

Air capacity: 1200-1500 m³/h